

Name: _____



Phenomenon: The Effect of Aloe Liquid on Skin Open Inquiry Lesson



What do you notice?
(Observation)



Rosie puts aloe liquid in the rabbit's ear that is hurting and she rubs an aloe leaf on the beluga whale's rash that is itchy.



What do you wonder?
(Question)

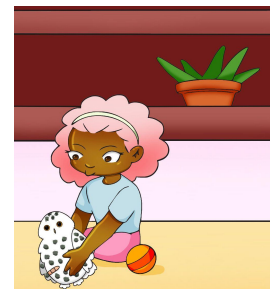


Why does she do that?

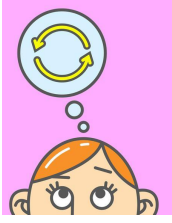
What information do
you have?



"Do you have to use this cactus on the puppy?" Rosie asked, eyeing a plant in the corner of the room. Mom smiled. "It's not a cactus. It's an aloe plant. The liquid in the leaves helps skin feel better."



What do you think?
(Hypothesis)



If aloe liquid makes skin feel better, it should make skin feel better even if it's not hurting or does not have a rash.

Experiment



Write or draw your idea for an experiment here. Include materials you would need.

Materials

My experiment would look like
(draw a picture)

Explanation

I noticed
(Data)



I learned that
(Conclusion)



I learned that...

Tell Others

