

Directions:

Cut out the cards. Mix them up and lay them face down. Each person picks up two cards during their turn. If the cards match in terms of structure and function, the person keeps the match and gets another turn. If not, the person turns both over again and returns them to their original spot. Each person needs to remember where the cards are so that, over time, they can purposely choose matching sets. The person with the most matching sets at the end of the game wins.

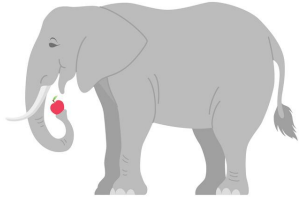


Image Credit: iStock.com/ AQtaro_neo

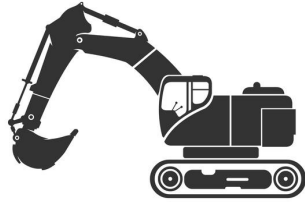


Image Credit: iStock.com/ grimgram

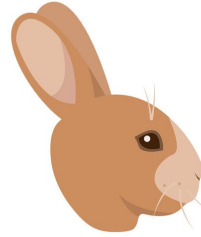


Image Credit: iStock.com/ Elena Istomina



Image Credit: iStock.com/adekvat

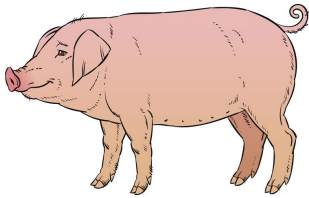


Image Credit: iStock.com/ AQtaro_neo

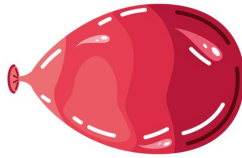


Image Credit: iStock.com/ djvstock

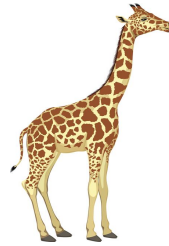


Image Credit: iStock.com/ ekolara



Image Credit: iStock.com/ JulyVelchev



Image Credit: iStock.com/ Nadezhda Shoshina



Image Credit: iStock.com/ cookelma



Image Credit: iStock.com/ Igor Rozvodovskyi

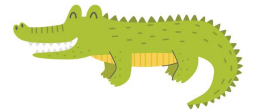


Image Credit: iStock.com/ lullia Ivanova

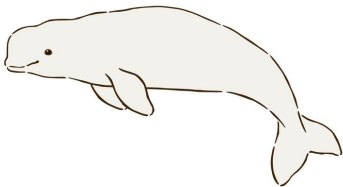


Image Credit: iStock.com/hikawa

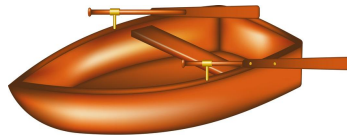


Image Credit: iStock.com/ Jiripravda

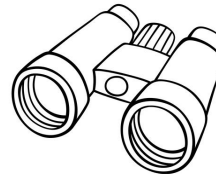


Image Credit: iStock.com/ Fidan



Image Credit: iStock.com/MEFEnglish



Image Credit: iStock.com/ Suppachok Nuthep



Image Credit: iStock.com/ Sensvector



Image Credit: iStock.com/OLENA MATSEPLIUK



Image Credit iStock.com/Graphics Studio MH